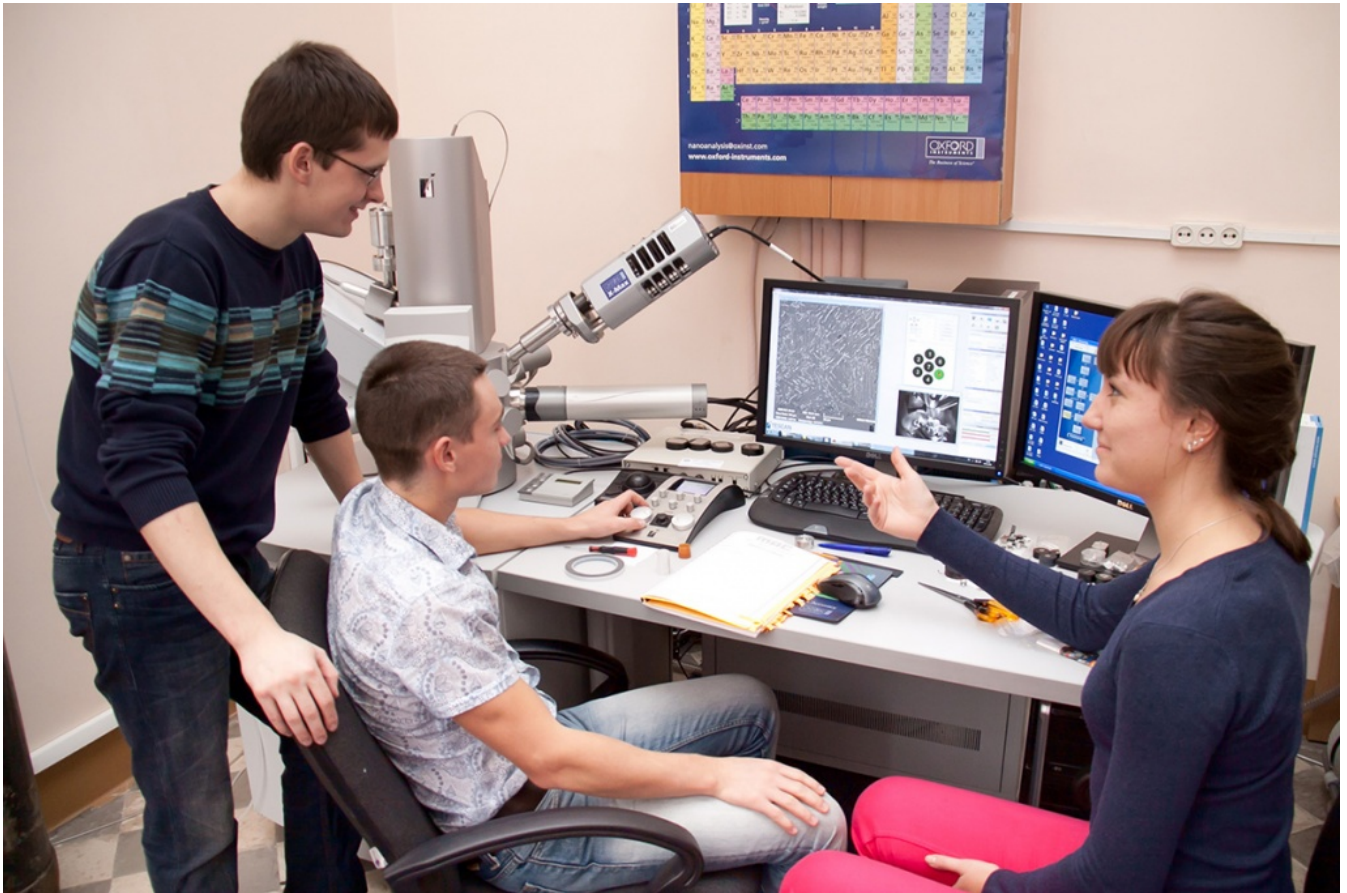


Institute of Metallurgy, Mechanical Engineering and Transport – career options!

“Which career to choose?” – it is the question that haunts most school graduates. Quite a number of them opt for metallurgy area at the Institute of Metallurgy, Mechanical Engineering and Transport. Apart from metallurgical engineers, this institute prepares mechanical engineers, specialists in additive technologies, robotics, and industrial designers.



The variety of areas of expertise stems from the fact that the institute consists of two large scientific schools – Department of Material Technology and Department of Mechanical Engineering, whose history dates back to the foundation of the university itself.



Currently, the faculties of the Department of Material Technology are involved in creation of perspective materials and study of their physical and chemical properties, foundations are laid for creation of new technologies, their production and processing. For instance, “The study and modeling of the structure and properties of metals” laboratory, which was created at IMMIT in 2007, works on production of new technologies meant to control the materials’ properties, the study of these properties, as well as modeling of their plastic deformation. The equipment available is equal to the one used at the central plant laboratories of the leading metallurgy plants of Russia.

Among the majors available at the Department of Mechanical Engineering is machine design, computer modeling of technical systems, machine technology, automated machine production, and others. The demand for Russian-made equipment to satisfy import substitution policy is high, so the institute signed a contract with BPK team and “Instrument engineering plant” for equipment production for the largest national manufacturers.



The Institute of Metallurgy, mechanical engineering and transport has been engaged in international scientific cooperation since October, 2016, when a new research center for energy technology and materials was opened in Changxing (China).



One of the youngest, but already acclaimed, faculties of the department within IMMIT is Engineering Graphics and Design. It includes four major disciplines: graphics, information, industrial, and environmental design. The faculty is headed by prof. Ivanov, authorized representative of the Union of Designers in North-Western region. The faculty joins forces with the State Hermitage, State Russian museum, Peterhof and Oranienbaum and promotes academic mobility between the leading universities of Great Britain, Germany, the U.S.A., Japan, making student and staff exchange possible.

Since the majors offered by the Institute of Metallurgy, Mechanical Engineering and Transport are popular today, students from Europe, Middle Asia, Latin America, and Africa come here to pursue a degree. The institute board strives for facilitating students' adaptation in order to help them advance smoothly through the course. Students themselves spice up the monotony of the educational process sometimes: "NGneerS Battle" competitions are held regularly by the student union of IMMIT. They also exercise their engineers' wit at case study championships.

Дата публикации: 2017.01.30

[>>Перейти к новостям](#)

>>Перейти ко всем новостям